

Internet Memory Phone

NT-P100M



User's Manual

Table of Contents

❖ Chapter 1: Introduction	1
○ What is Skype?	1
○ What about my NexoTek phone?	1
○ Product Features	1
○ Package Contents	2
○ System Requirements	2
❖ Chapter 2: Connecting Your Phone	3
○ New Computer Use	5
○ New Account Use	6
○ Making a Test Call	9
❖ Chapter 3: Getting to Know Your Phone	11
○ Keypad Buttons	11
○ Idle Screen Description	12
❖ Chapter 4: Using Your Phone	13
○ General Operation	13
▪ Choosing Your Ring Tone	13
▪ Reviewing Your Call History on the Phone	14
○ Receiving and Making Calls	15
▪ Answering and Refusing Calls	15
▪ Calling From Your Contact List	15
▪ Calling From Your Call History	16
▪ Calling Using Speed Dial	16
▪ Calling From Your Call History on the Phone	16
▪ Making SkypeOut Calls	17
○ Advanced Features	18
▪ The Hold Function	18
▪ The Call Waiting Function	18
▪ The Mute Function	18

❖ Chapter 5: Troubleshooting	19
○ SkyMagic Icon Indicators	19
▪ Enabling SkyMagic to use Skype	20
○ Your Computer Audio Settings	22
○ Can I use the phone with multiple Skype accounts?	24
○ Contacting NexoTek	25
❖ Appendices	26
○ Appendix A: Managing Skype Contacts	26
▪ Adding a Skype Contact	26
▪ Removing a Skype Contact	29
○ Appendix B: Assigning a Speed Dial Number	30
○ Appendix C: Purchasing Skype Credit	32
○ Appendix D: Updating Skype	36
▪ Downloading Skype	36
▪ Replacing the Skype Files	40
○ Appendix E: Updating SkyMagic	46
▪ Downloading SkyMagic	46
▪ Replacing the SkyMagic Files	49

What is Skype?

Skype is a program that essentially turns your computer into a phone and allows you to make calls over the Internet to other Skype users. Because the connection is established over the Web, Skype-to-Skype calls are completely free of charge, and this is why phone companies do not want you to know about Skype. You can use Skype to call people as close by as your neighbors or as far away as someone on the opposite side of the globe. It's simple, efficient, and gets rid of long-distance calling costs.

What about my NexoTek phone?

Your NexoTek phone has been designed to be used with Skype for a more convenient Internet calling experience. The NT-P100M Skype Memory Phone conveniently stores the Skype program, account information, and your personal data on its built-in 128 MB flash drive. This means you can use the phone anywhere you go, even on computers that don't have Skype installed on them, so it is an ideal travel companion. The Memory phone also has a user-friendly auto-run function: when hooked up to a computer, Skype and the SkyMagic software that the phone uses automatically begin running. This makes it perfect for those unfamiliar with Skype or computers in general. You simply plug it in and talk right away.

The phone is equipped with an LCD screen that displays caller ID as well as the date and time. It also has mute, hold, and call waiting functions. Your NT-P100M rings for all incoming calls and includes five different ring styles each at two volume levels. NexoTek's noise reduction and echo cancellation technology ensure that you will have only the best quality calls.

Product Features

- Built-in 128 MB flash drive stores Skype, your account information, and can hold other personal data
- Auto-run function allows you to just plug in the phone and call
- LCD screen displays caller ID, date, and time
- Mute, hold, and call waiting functions
- Rings for all incoming calls
- Five different ring styles each at two volume levels
- Noise reduction and echo cancellation technology deliver clear, high-quality calls

Package Contents

Your NT-P100M box contains the following items:

- ✓ One (1) NexoTek NT-P100M USB Internet Memory Phone
- ✓ One (1) Quick Start Guide

System Requirements

In order to use your phone and the necessary software that accompanies it, your computer must have the following:

- ✓ One (1) of the following compatible platforms:
 - Windows 2000 SP4
 - Windows XP
- ✓ Minimum 400 MHz processor
- ✓ 128 MB RAM
- ✓ 15 MB free disk space
- ✓ One (1) of the following compatible USB ports:
 - USB 1.1
 - USB 2.0
- ✓ Broadband Internet connection: cable, DSL

Connecting Your Phone

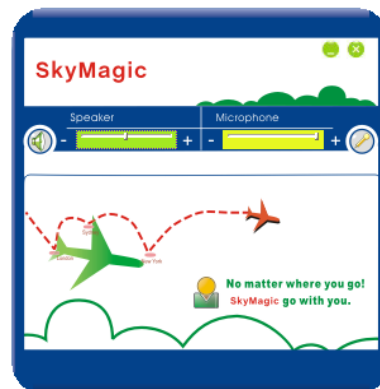
Using your Memory phone is simple. First, you plug the phone into an open USB port. After that, both Skype and SkyMagic – the software that enables the phone to be used with Skype – run automatically thanks to the auto-run function. There is no installation required. Lastly, Skype will sign you in automatically. Then you can start calling!

1. Take the cord of the phone and carefully insert it into an open USB port. After a few seconds, the AutoRun window will appear. You will see the SkyMagic icon – a dark green phone against a light green background. Highlight it and click **OK**.



⇒ If you are connecting the phone to a computer that it has never been plugged into before, balloons will appear in your system tray before this screen appears. Please see the [New Computer Use](#) section on page 5 before proceeding.

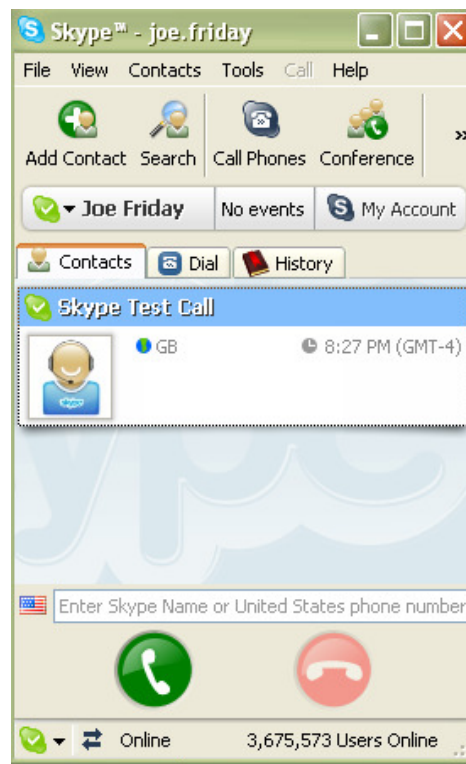
2. You will hear your phone beep, and the screen should display the time, date, and the words **NO SKYPE**. You will see the SkyMagic window flash on your screen.



After a few seconds, Skype will automatically sign you into the program. In your system tray, you should see the Skype icon – a white check against a green background – and the SkyMagic icon – a green phone against a green background.



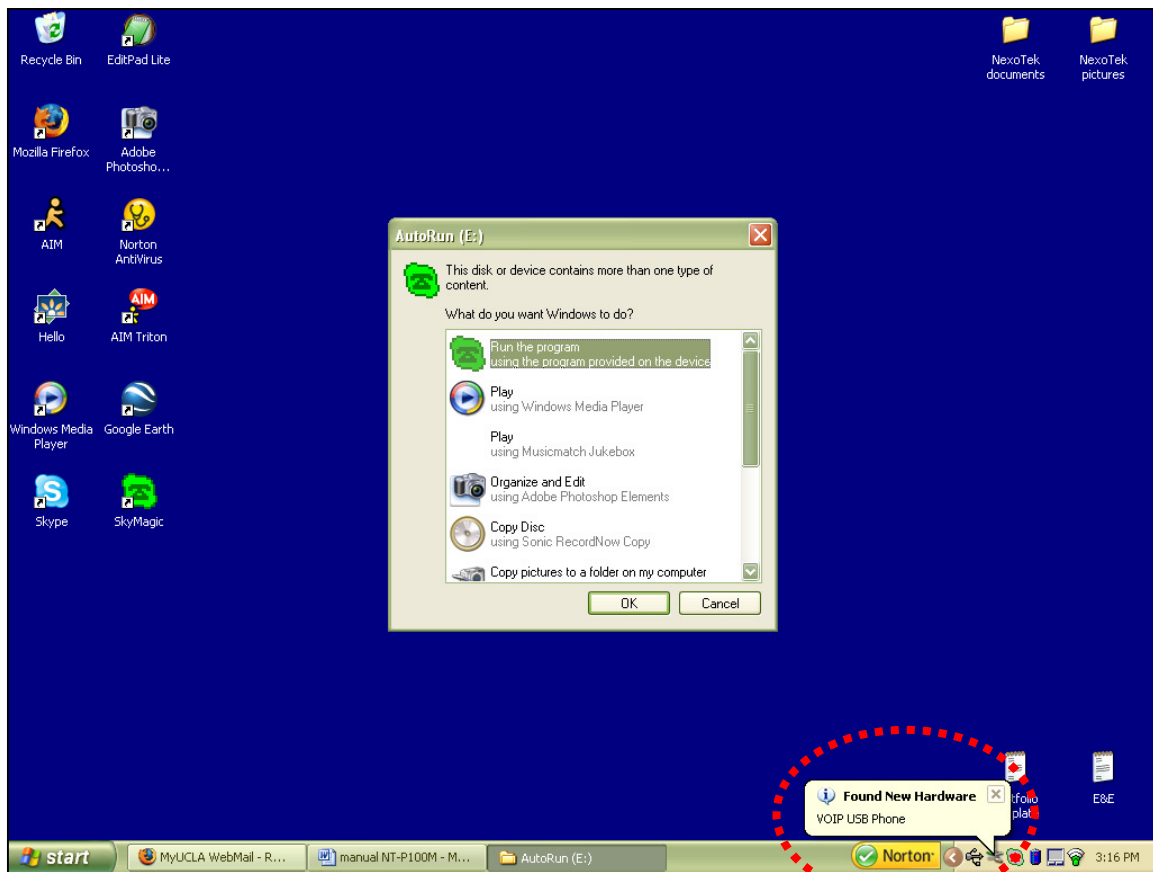
- ⇒ If you have never used your phone before, it will not have your account information stored on it, so you will not automatically be signed into Skype. Please refer to the *New Account Use* section on page 6 before proceeding.
3. You should see your main Skype window on the screen. Now you have completed the connection process for your phone and are ready to make Skype calls!



New Computer Use

If you are using the phone on a computer that it has never been plugged into before, you will see several balloons appear in your system tray when you connect it. These balloons indicate that your computer has detected and installed the phone's drivers, and it is normal for them to appear.

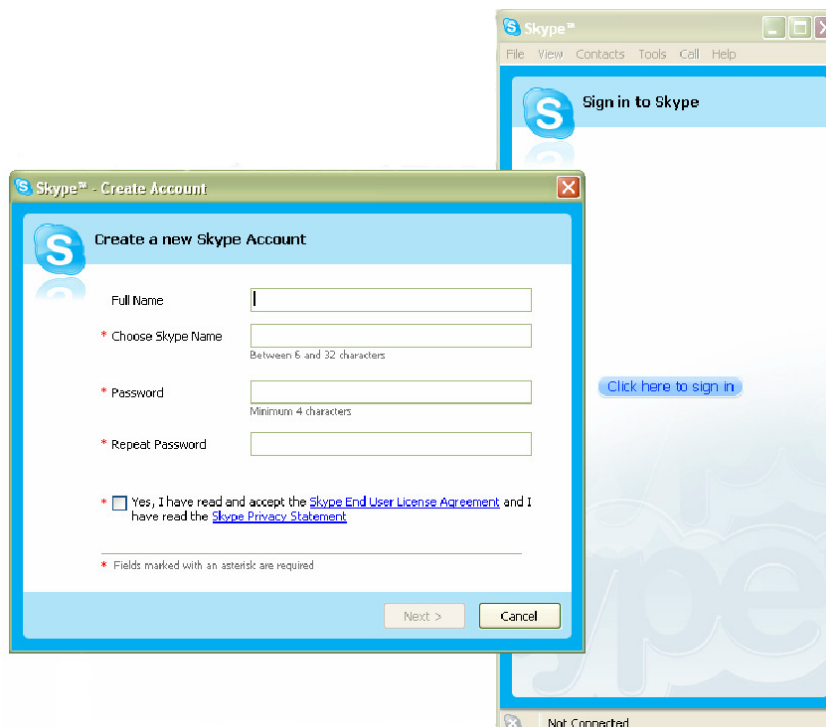
Wait until you see the last balloon pop up; it should say *Your new hardware is installed and ready to use*. If your computer asks you to restart, you may disregard this request and continue step two of with the phone connection process.



New Account Use

If you have never used your phone before, it will not have your account information stored on it. You have to create a Skype account or sign in so that the phone can store your information and automatically sign you in next time.

1. Instead of signing you in, the auto-run function will bring up the Skype sign-in window and the Skype - Create Account window.



If you already have a Skype account, click **Cancel** and sign into the program. If not, please continue reading.

2. Enter the required information in the Skype - Create Account window, taking note to remember what you choose to put in Choose Skype Name and Password. This is the account name you will use to talk to other Skype users, and you need the password to sign into your account. Check the box indicating that you accept the Skype End User License Agreement and the Skype Privacy Statement. Then hit **Next>**.

Skype™ - Create Account

Create a new Skype Account

Full Name

* Choose Skype Name
Between 6 and 32 characters

* Password
Minimum 4 characters

* Repeat Password

* Yes, I have read and accept the [Skype End User License Agreement](#) and I have read the [Skype Privacy Statement](#)

* Fields marked with an asterisk are required

3. In the next window, you have the option of entering your e-mail address and country or region and city of residence. This information is optional. If you choose to give your e-mail address, you also have the option of receiving news and special offers from Skype. You may also choose whether or not you want Skype to sign you in automatically when the program is run. When you have finished configuring your preferences, press the **Sign In** button.

Skype™ - Create Account

Create a new Skype Account

E-mail
E-mail is optional, but it is the only way to retrieve your password.

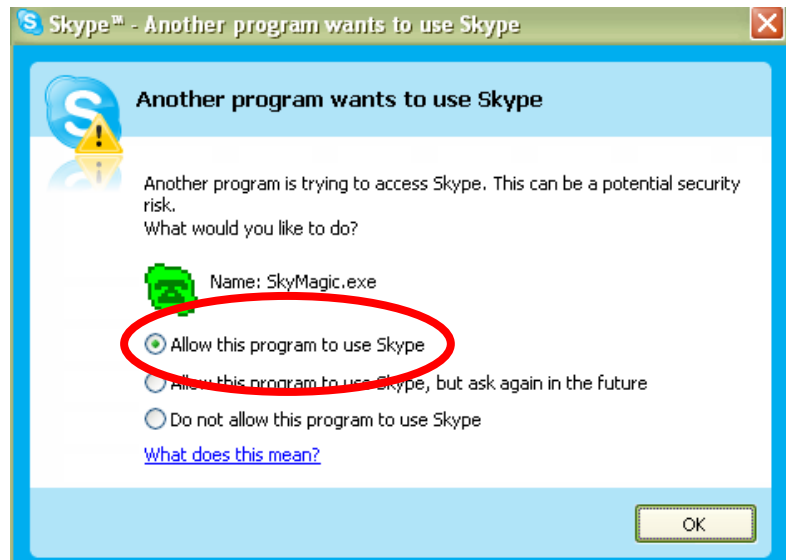
Yes, send me Skype news and special offers

Country/Region

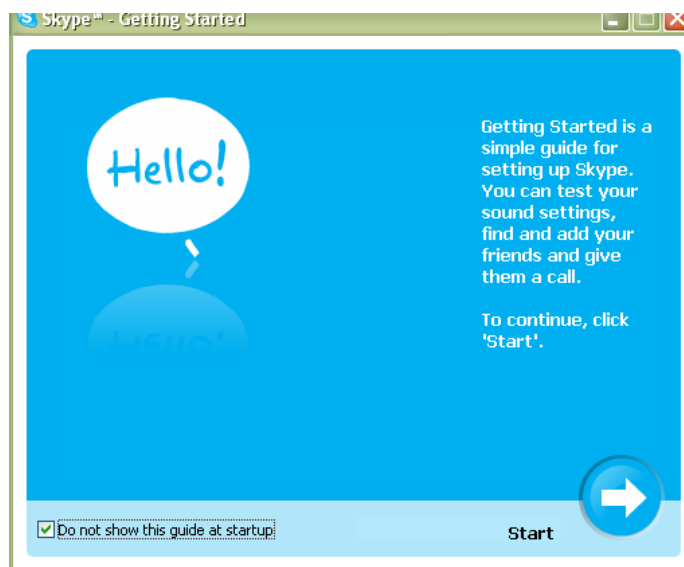
City

Sign me in when Skype starts

4. A window will pop up saying Another program wants to use Skype. Choose the first option that says **Allow this program to use Skype** and then press **OK**. If you accidentally select the wrong option, please see the Enabling SkyMagic to use Skype portion of Chapter 5.




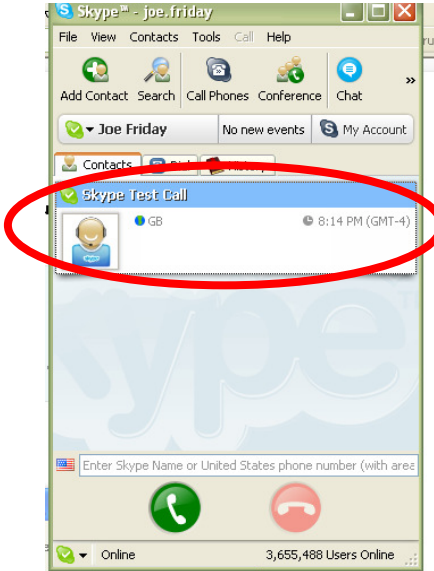
5. A Getting Started window will pop up. Check the box in the lower left corner that says **Do not show this guide at startup** and then close the window. Now you have finished creating your Skype account. If you would like, you may continue reading to learn how to make a test call, or you can continue with step three of the connection process.



Making a Test Call

If you are new to Skype, you can make a test call to Skype to try it out.

1. Highlight the user **Skype Test Call** in your **Contacts** tab by single-clicking on it. Then press  on your phone to send the call.



2. The automated voice guides you through making the test call by prompting you to record a message and then playing it back to you. On your screen, you should see a tab for the **Skype Test Call**.



3. When the call is finished, you will be brought back to the `Contacts` tab of your Skype window. If you were able to hear your message played back to you, then you know for sure that your phone is working.

If you were not able to hear the message you left, there may be something wrong with your computer's audio devices. Please refer to the Skype Web site for help by going to `http://www.skype.com` in your Internet browser.



What should I know before using my phone?

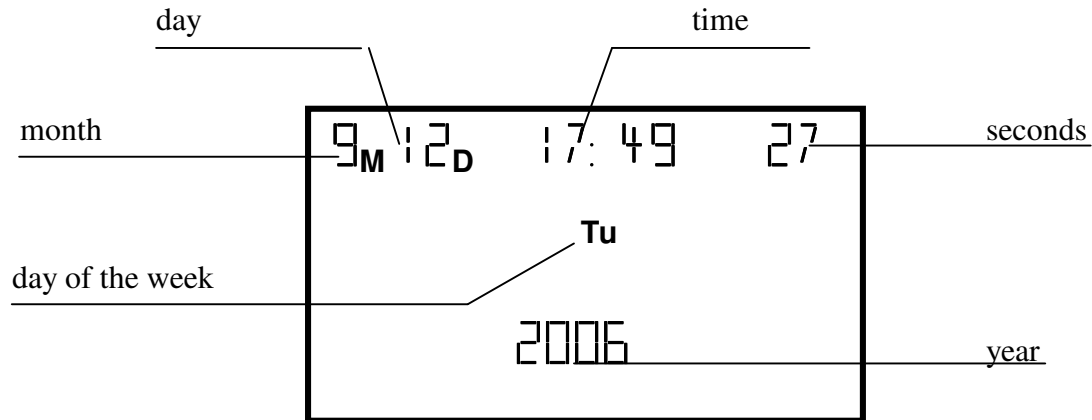
Once your phone is plugged into your computer and you have successfully logged in to Skype, you should take some time to briefly learn about the basics of the keypad buttons before using it. This will enable you to make calls with more efficiency and less confusion.

Keypad Buttons



Idle Screen Description

When your phone is in the idle state, it displays the time and the date for you. The screen should look like this:



What can I do with my phone?


Your phone can make and receive free Skype-to-Skype calls. You can also use your phone to make SkypeOut calls to any phone number in the world at a lower rate than what phone companies charge.

In addition, you might also like to choose your ring tone.


General Operation




Choosing Your Ring Tone

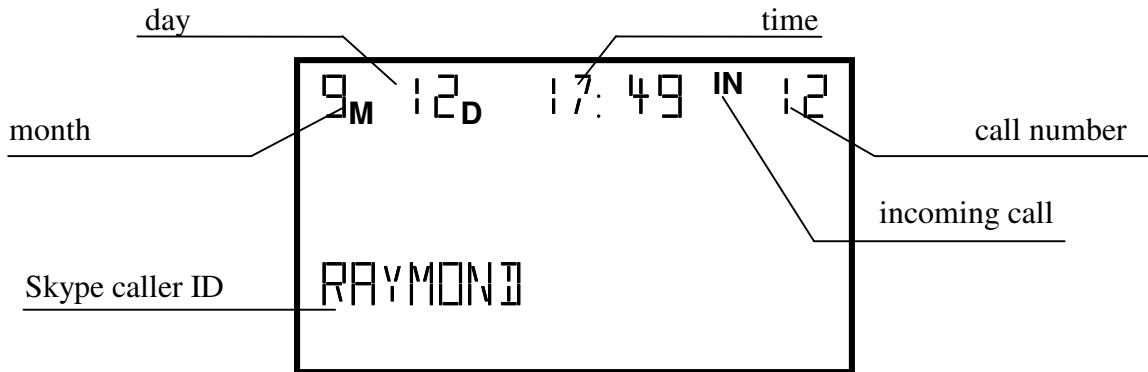
Your phone comes with five different ring tones, each with a loud or soft volume option. You can change the ring tone with the press of a button.




1. Press **#** . The ring tone your phone is currently set to will play.
2. Press the same button again to play the phone's different ring tones. When you have found one that you like, simply stop cycling through them.

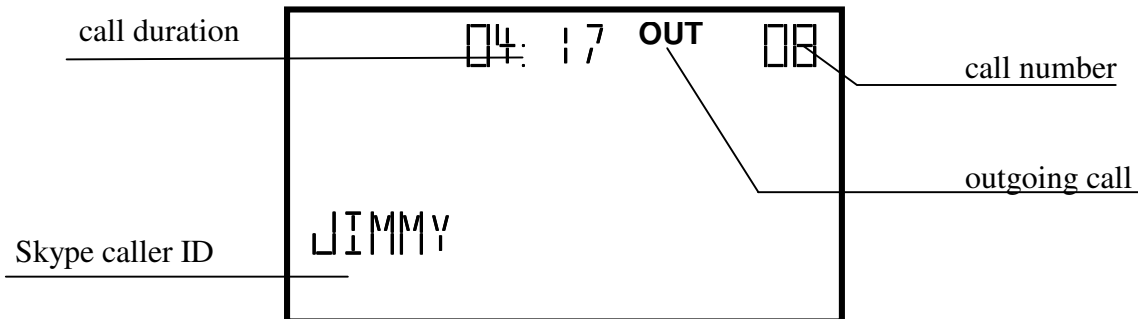
Reviewing Your Call History on the Phone

Your call history is stored on the phone, so you can view it on your phone's LCD screen on any computer. Before viewing your call history on the phone, make sure the Skype window is closed on your computer screen. Press  to close it if it is open.

Press  to display the incoming call screen and press   to scroll through your received calls. The phone will display the date and time of the call, the call number, and the caller ID of the contact who called you.





Press  to display the outgoing call screen and press   to scroll through your dialed calls. The phone will display the duration of the call, call number, and the caller ID of the contact you called.




Receiving and Making Calls


Skype-to-Skype calls are completely free of charge. Making and receiving calls is easy, especially with your NT-P100M.

Remember that during any call, you can press   to control the phone's volume.

Answering and Refusing Skype Calls







If it is properly connected and if SkyMagic is running, your phone will always ring when you have an incoming Skype call. You then have the option of either answering the phone and talking to the caller, or refusing it if for some reason you do not want to take the call. This simply hangs up on the caller.

Press  to answer the call.

Press  to refuse the call.







Calling From Your Contact List

In order to call someone from your contact list, you must first add his or her Skype name to your contact list. For instructions about how to add Skype users, refer to Appendix A.

1. On your phone, press  to bring up your Skype window on the computer screen.
2. Use the   buttons to get to your `Contacts` tab.
3. Scroll with   to select a contact.
4. Press  to place a call to the desired Skype user.


Calling From Your Call History

If you want to call a Skype contact who you spoke to recently, you can call him or her from your call history rather than scrolling through all of your contacts.

1. Press  to bring up your Skype window on the computer screen.
2. Use the   buttons to get to your History tab.
3. Scroll with   to select an entry.
4. Press  to place a call to the desired Skype user.






Calling Using Speed Dial

If there are Skype contacts to whom you talk frequently, using speed dial is the most convenient way of calling them. Speed dial works on your phone like it does on a mobile or home phone. To call someone using speed dial, you must first assign him or her a speed dial number. For instructions about how to do this, see Appendix B.

1. Use the **0-9** numbers on your phone to dial the speed dial number of the Skype contact whom you want to call. Your Skype window will open on your computer.
2. Press  to place a call to the desired Skype user.

Calling From Your Call History on the Phone


If you want to call a Skype contact who you spoke to recently, you can call him or her from your call history rather than scrolling through all of your contacts.

1. Press   to display the incoming or outgoing call screen on the phone.
2. Scroll with   to select an entry.
3. Press  to place a call to the desired Skype user.

Making SkypeOut Calls


SkypeOut is a paid service provided by Skype that lets you call any phone number in the world. Because it uses an Internet connection instead of a phone line, long-distance calling rates are significantly lower. You might want to use SkypeOut if your friends do not have Skype, if they are offline, or if you want to save money on your long-distance calls. To buy Skype Credit to make SkypeOut calls, refer to Appendix C.

1. On your phone, use the ***+** button to dial + and then the **0-9** buttons to dial in the country code and phone number you are trying to reach.

If you accidentally dial an incorrect digit, you may press  to erase the number you have input.

2. Press  to send the call.

For example, to call someone in Edinburgh in the United Kingdom with the phone number (123) 456-7890, you would dial +441234567890 as follows:

+	44	1234567890	
	Country Code	Number	

As another example, say you wanted to call someone with the phone number (123) 456-7890 in Taiwan. You would dial +8861234567890 as follows:


+	886	1234567890	
	Country Code	Number	

- ⇒ If you do not know the country code of the number you wish to contact, visit the Skype Dialing Wizard by opening your Web browser and typing `www.skype.com/products/skypeout/rates/dialing.html` in the address bar. This will guide you through making a SkypeOut call.
- ⇒ Even if you are calling someone in the same country or area code region, you still need to dial the country code and full phone number of your SkypeOut contact.

Advanced Features

The Hold Function





If you are talking on Skype but need to put your call on hold because you have something else to do, your phone gives you the option of doing so.

Press  to place your call on hold.

To un-hold your call, press the same button again


The Call Waiting Function

If you are talking on Skype and want to stay on the line but also take an incoming call, your phone gives you the option of doing so with the call waiting function.

1. Press  to take the incoming call. This answers the incoming call and automatically puts your first call on hold.
2. To get back to the first call, first switch to it by pressing  . You will see the phone screen go from saying Line 2 to Line 1, corresponding to your second and first calls.
3. When you have switched to Line 1, press  to take your first call. This also automatically puts the caller on line 2 on hold.

The Mute Function

You may want to mute the phone during a call. This means that the person to whom you are speaking will not be able to hear you until you un-mute the phone.

To mute your current Skype call, press  during the call.

To un-mute your phone, press the same button again.

The Normal SkyMagic Icon



If your SkyMagic icon is a dark green phone on a light green background, your phone and the Skype and SkyMagic software are working properly.

SkyMagic Icon Indicators

If your system tray has one of these SkyMagic icons, the program is telling you that there is something wrong with your phone and/ or your Skype connection. Please follow the corresponding instructions to solve the problem.

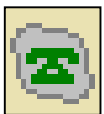


- ✓ Make sure your phone is properly connected to your computer
- ✓ Check your Internet connection
- ✓ Make sure Skype is running and you are logged in

⇒ If you are already logged in and the gray background persists, see the **Enabling SkyMagic to use Skype** instructions on the next page.



- ✓ Make sure your phone is properly connected to your computer

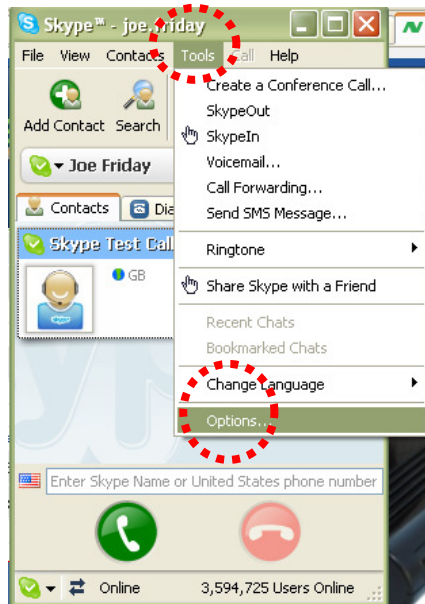


- ✓ Check your Internet connection
- ✓ Make sure Skype is running and you are logged in

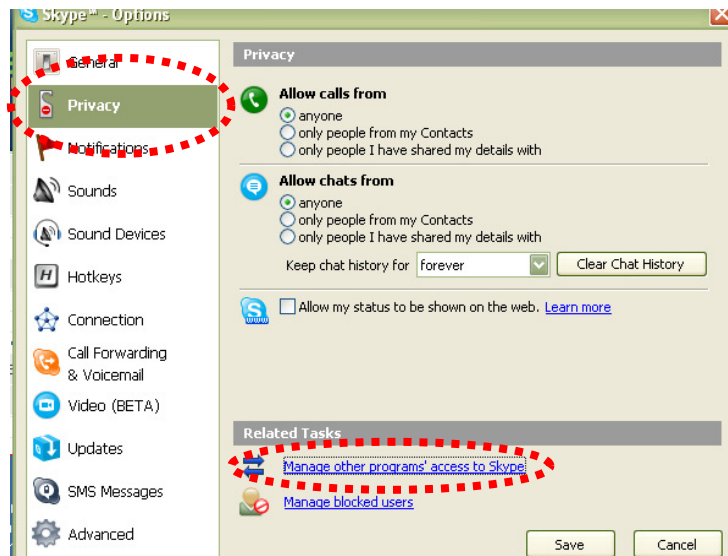
⇒ If you are already logged in and the gray background persists, see the **Enabling SkyMagic to use Skype** instructions on the next page.

Enabling SkyMagic to use Skype

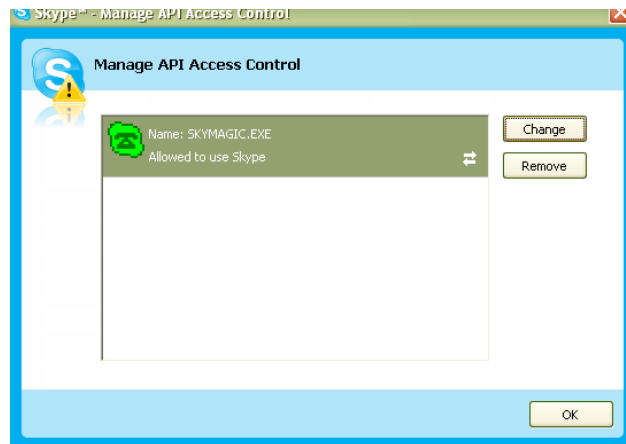
1. Click on **Tools** in your Skype window and go down to **Options**.



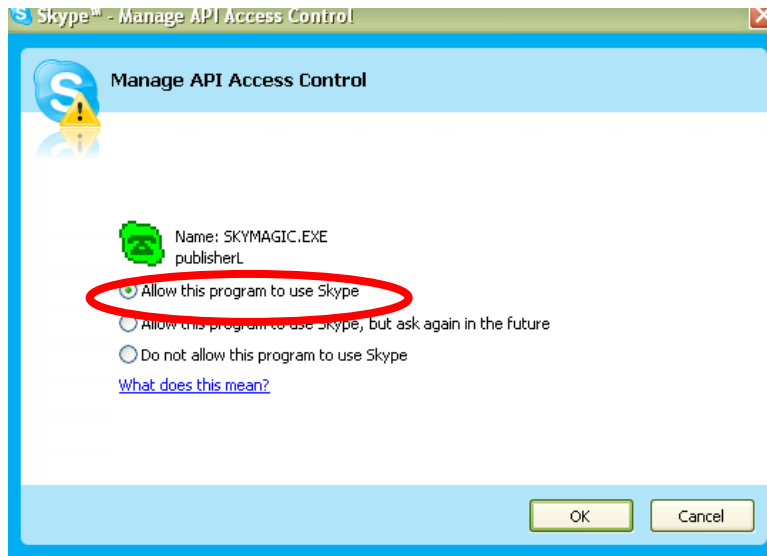
2. When that window opens, choose **Privacy** on the left-hand side and then click the **Manage other programs' access to Skype** link.



3. A window titled `Manage API Access Control` will appear. Select `SKYMAGIC.EXE` and press the **Change** button to allow SkyMagic to use Skype.



4. Another window will pop up asking you to choose what to do with `SKYMAGIC.EXE`. Choose the first option that says **Allow this program to use Skype** and then press **OK**.



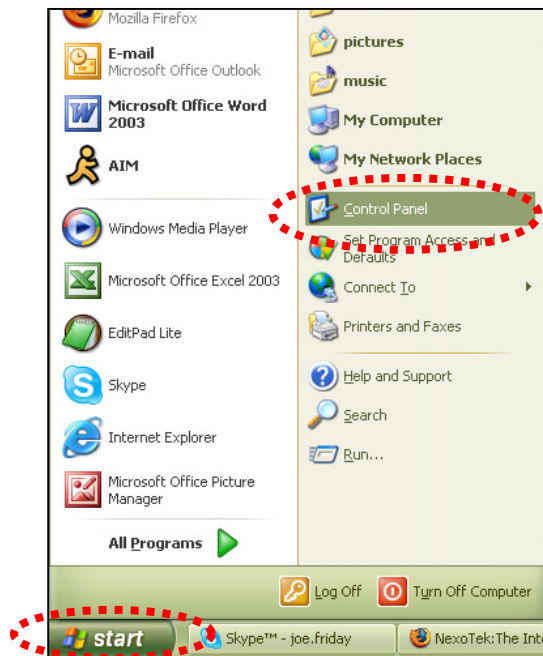
5. Click the **OK** button in the remaining open windows and the **Save** button in the `Skype Options` window. The SkyMagic icon in your system tray should now have a light green background. This indicates that Skype and SkyMagic have made a successful connection.

Your Computer Audio Settings

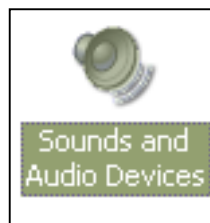
If your phone is working properly, you should be able to make Skype calls at the same time other sounds are coming from your computer. This means that if you are listening to music, watching movies, or playing games on your computer, the sounds from those activities should be coming from your speakers, and you can simultaneously have a Skype call on your phone.

How do I stop sounds from my music, movies, and games from coming through the phone?

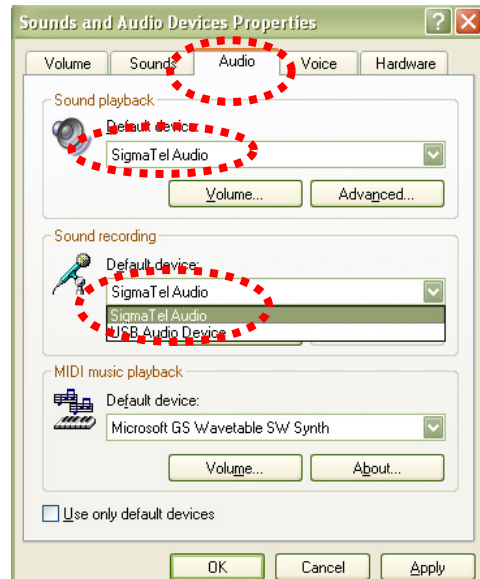
1. Go to the **Start** menu of your computer and click on **Control Panel**.



2. Double-click on the **Sounds and Audio Devices** icon.

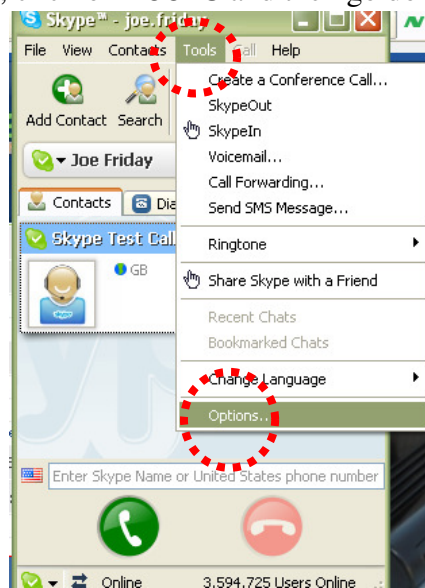


3. Under the **Audio** tab in the window that appears, set **Sound playback** and **Sound recording** to your computer's sound card, not the USB audio device. Then press **OK**. The problem should be solved.

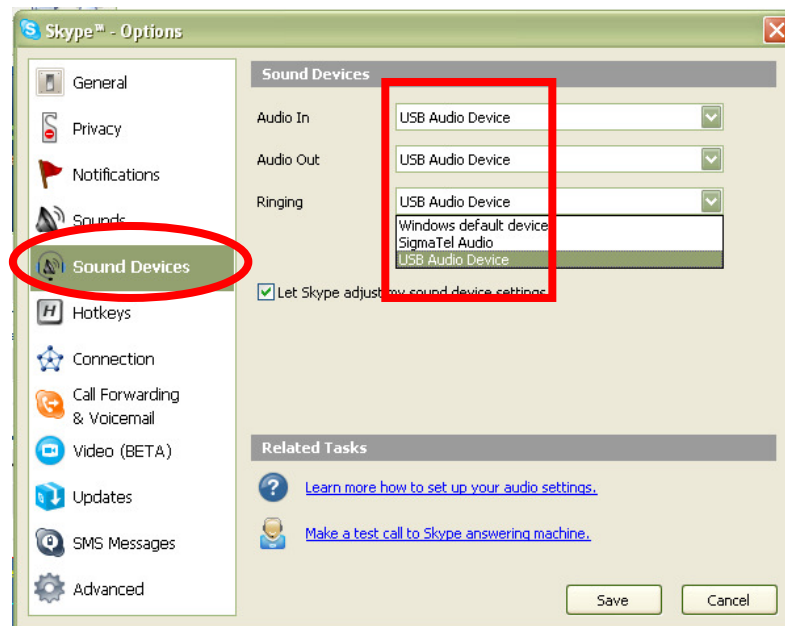


When I make calls, my friend's voice comes from my computer, not my phone. How do I fix this?

1. In your Skype window, click on **Tools** and then go down to **Options**.



2. In the Options window, choose **Sound Devices** on the left side. Where you see Audio In, Audio Out, and Ringing, change the setting to **USB Audio Device**. Then click the **Save** button. The problem should now be solved.



Can I use the phone with multiple Skype accounts?

Yes, you can. Your phone's flash drive is equipped to store information for multiple accounts. Just sign in with other Skype user names, and the account information will be stored automatically.

Contacting NexoTek

If for some reason you are not entirely satisfied with your NexoTek product or have further questions or comments to share, please do not hesitate to contact us.

United States

Address: NexoTek
1212 John Reed Court
City of Industry, CA 91745

E-mail: support@nexotek.com

Web site: www.nexotek.com

China

Address: NexoTek Ji-Da International
Suite 1102 #807
Zhao Jia Bang Road
Shanghai 200032

Tel: 86-21-64278437

Fax: 86-21-64274571

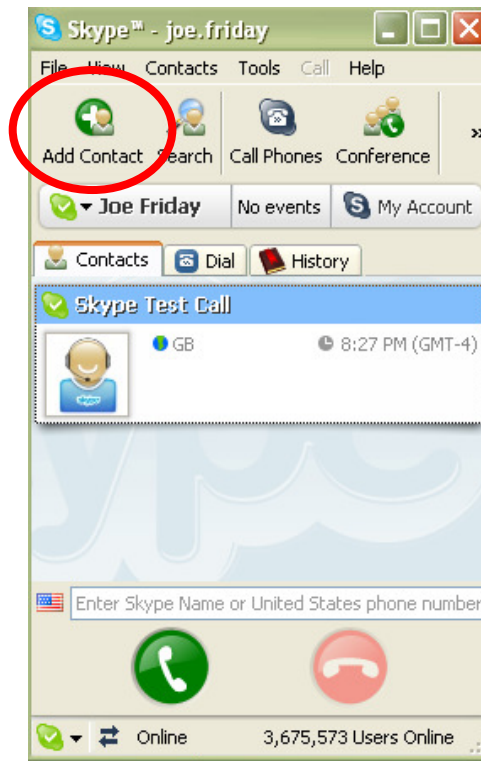
E-mail: chinasales@nexotek.com

Appendix A: Managing Skype Contacts

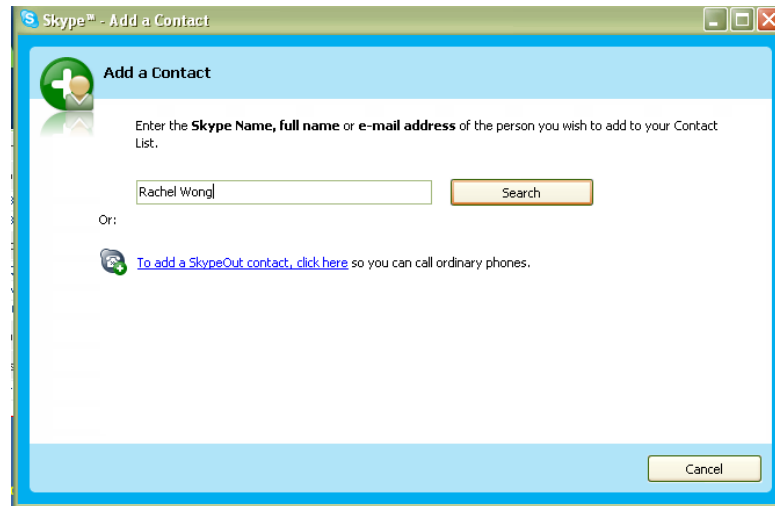
In order to talk to people through Skype, you need to add their user names to your list of contacts. This keeps your contacts organized, and when you are logged in, it allows you to see whether or not your friends are online and able to talk to you. You can also delete contacts from your list if you no longer speak to them.

Adding a Skype Contact

1. If you are not already logged into Skype, run the program and sign in with your user name and password. You should see the main Skype window. Click on the button in the upper left corner that says **Add Contact**.



2. A window titled `Add a Contact` will appear, asking for the Skype name, full name, or e-mail address of the person you would like to add. Enter the appropriate information that you know about the contact you want to add. Then press **Search**.



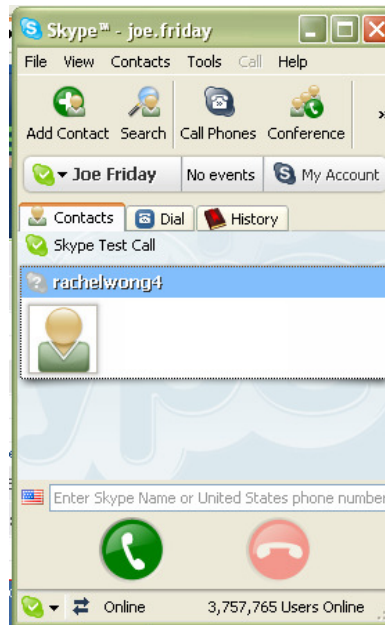
3. Multiple results may appear when you search. Select the correct contact by single-clicking on his or her row and press the button that says **Add Selected Contact**.



4. You then have the option of sending a greeting message to the contact. Write something if you desire, then press **OK**. You may close the Add a Contact search window.

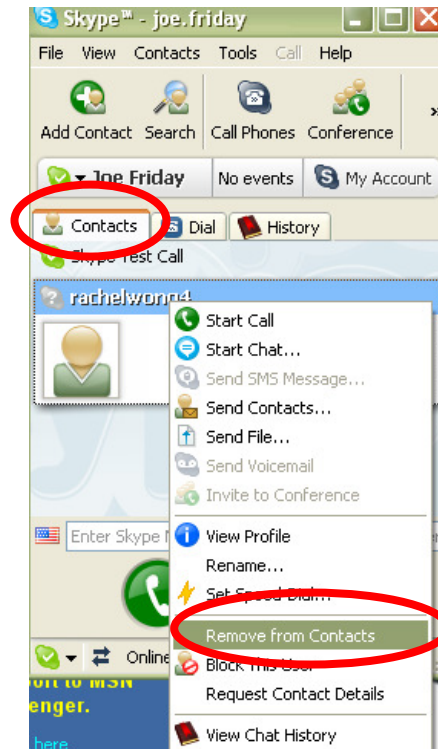


5. Now that Skype user has been added to your contact list and should appear on your **Contacts** tab. This contact must authorize you to view his or her information before you can call him or her.

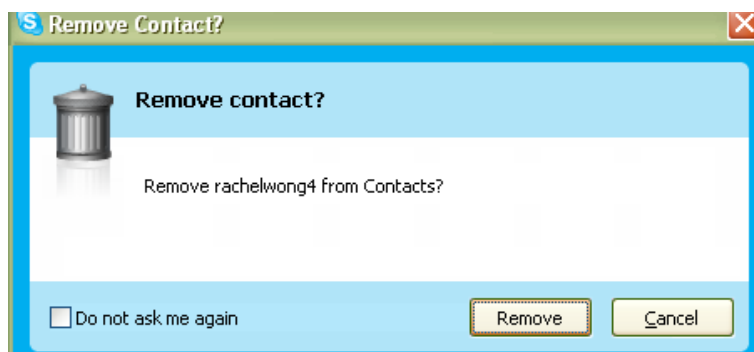


Removing a Skype Contact

1. To remove a Skype user from your contacts list, make sure you are on the **Contacts** tab of the Skype window. Find the user you want to remove from the list and right-click on his or her name. Go down to **Remove from Contacts**.



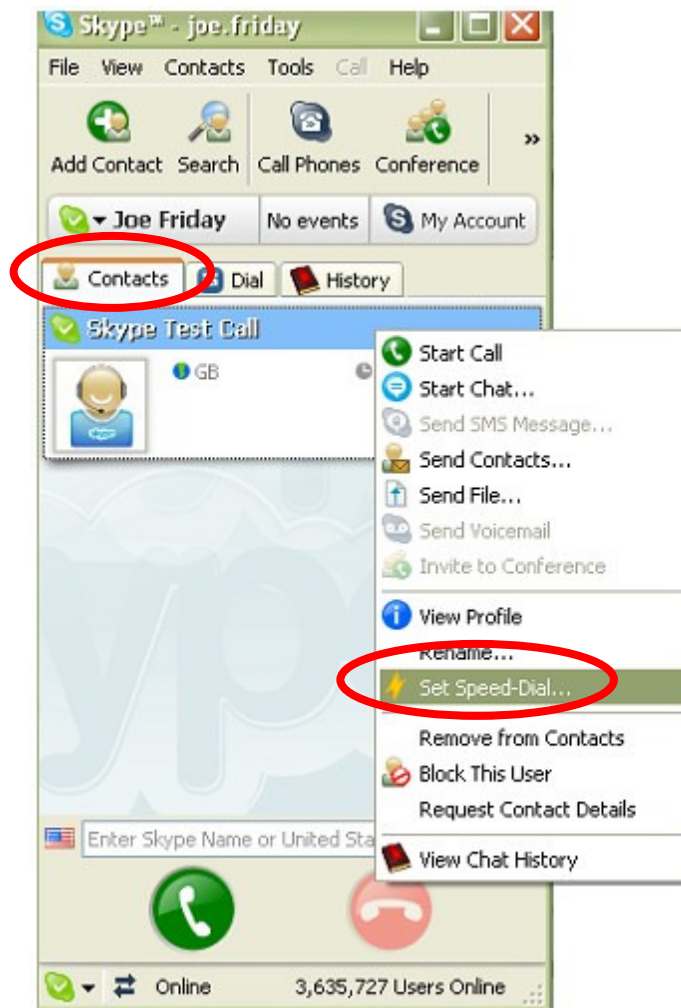
2. Press the **Remove** button when a window titled **Remove Contact?** appears.



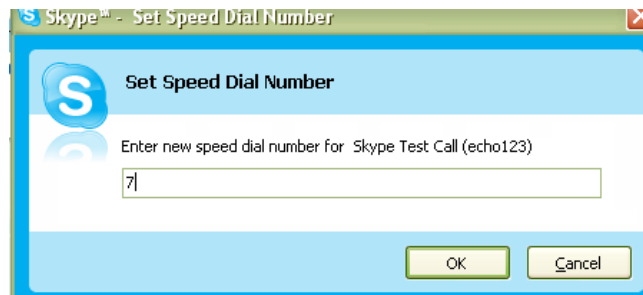
Appendix B: Assigning a Speed Dial Number

Speed dial works on Skype like it does on a home or mobile phone and is especially helpful if you make frequent Skype calls. Before assigning a speed dial number to a Skype user, he or she must be on your contacts list. Please refer to the Appendix A for instructions about adding Skype contacts.

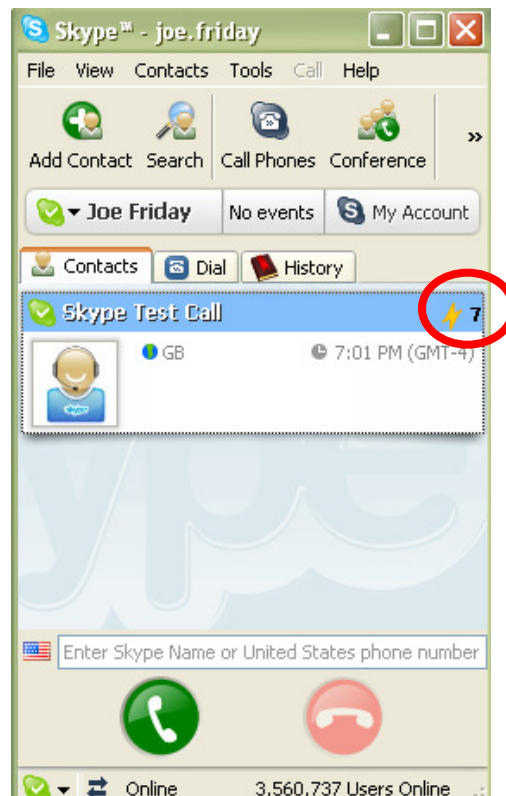
1. When you are logged into Skype, go to the **Contacts** tab in the main Skype window. Right-click on the name of the user whom you want to place on speed dial and go down to **Set Speed-Dial**.



2. When the window titled `Set Speed Dial Number` appears, enter the number you would like to assign to that contact. It must be a number between 1 and 99 Then press **OK**.



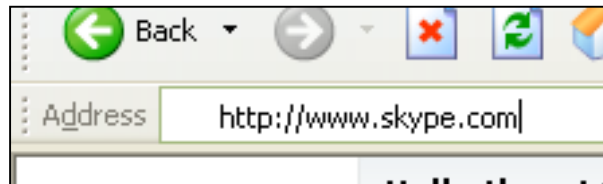
3. Now, when you look at your Skype Contacts tab, you should see the speed dial logo – a small lightning bolt – and the speed dial number across from your contact's name.



Appendix C: Purchasing Skype Credit

In order to use the SkypeOut service, which lets you call any phone number in the world from your computer, you first have to purchase Skype Credit. This is done on the Skype Web site.

1. Open your Internet browser and type `http://www.skype.com` into your address bar. Then press your **Enter** key. This brings you to the Skype home page.



2. Scroll down the page. On the left side, you will see a button that says **Buy Skype Credit**. Click on this link.

Calling international phones - SkypeOut

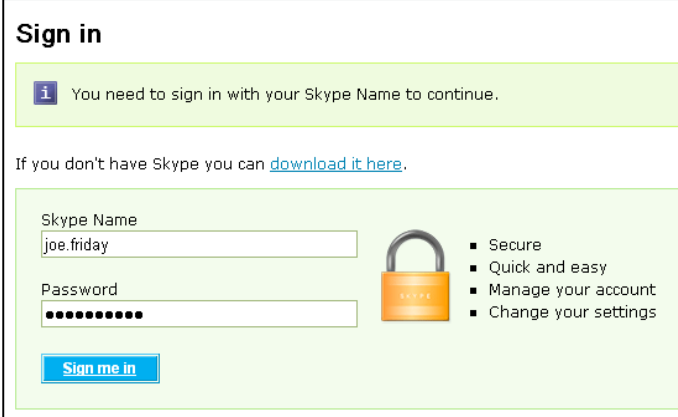
Use Skype to call regular phones. Calls to Japan are free on this weekend, but SkypeOut rates are low all year round. SkypeOut rates to phones in Japan:

- 2.3¢ per minute to fixed lines in Japan.
- 15.4¢ per minute to cell phones in Japan.

[See rates to all countries](#)
[Learn more about SkypeOut](#)

 **Buy Skype Credit**

3. The Skype site will ask you to sign in. Do this by entering your Skype user name and password, then pressing **Sign me in**.



Sign in


i You need to sign in with your Skype Name to continue.

If you don't have Skype you can [download it here](#).

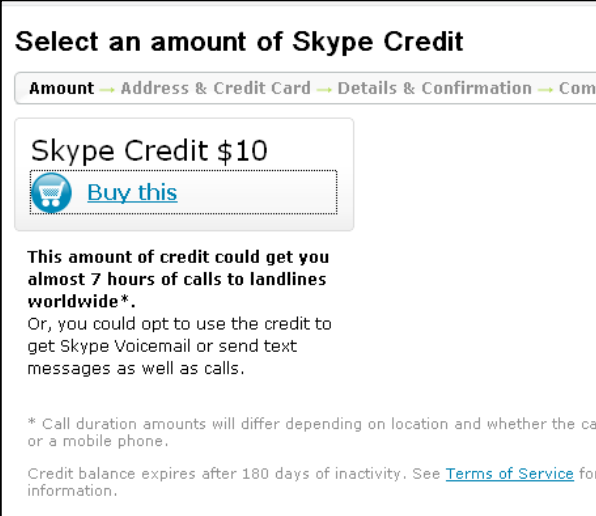
Skype Name
joe.friday

Password
●●●●●●●●

Sign me in

 **Secure**
▪ Quick and easy
▪ Manage your account
▪ Change your settings


4. Proceed through the Skype Credit purchasing process by accepting the amount of Skype Credit. Click on the **Buy this** link.



Select an amount of Skype Credit

Amount → Address & Credit Card → Details & Confirmation → Complete

Skype Credit \$10

 **Buy this**

This amount of credit could get you almost 7 hours of calls to landlines worldwide*.
Or, you could opt to use the credit to get Skype Voicemail or send text messages as well as calls.

* Call duration amounts will differ depending on location and whether the call is made from a landline or a mobile phone.

Credit balance expires after 180 days of inactivity. See [Terms of Service](#) for information.

5. On the next page that loads, enter your e-mail address and Skype password at the top of the page. Then you may change the currency that you plan to use to pay for your Skype Credit if desired.

soft Internet Explorer

://secure.skype.com/store/buy/register.html

skype Welcome back, joe.friday! Buy Skype Credit | Your account | Sign out

Amount — Address & Credit Card — Details & Confirmation — Completed Order

Personal Information

Your details

Email address *
joe.friday@mail.com

Skype password *
●●●●●●●●

Change currency

American Dollar Euro

Japanese Yen British Pound

6. When you go down to the bottom of the Web page, check the box that says **I agree to the Skype Terms of Service** and click the **Submit** button.

Terms of Service

IMPORTANT — PLEASE READ CAREFULLY

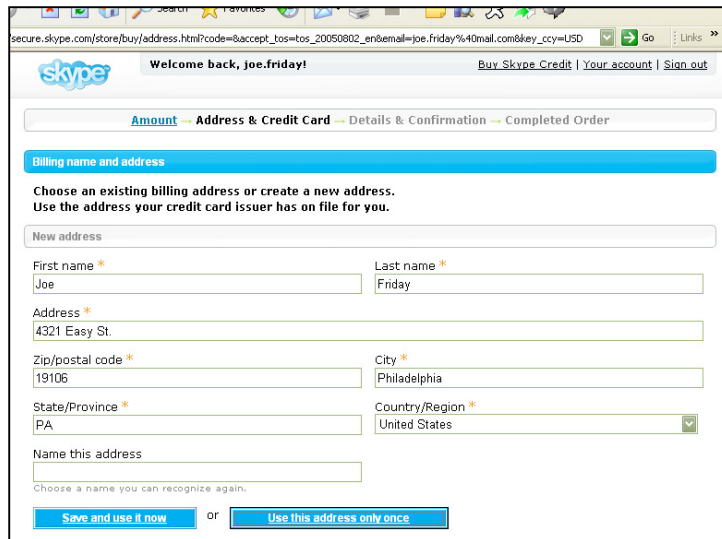
Before reading the articles below, please note the following preliminary terms, which use some of the definitions specified in Article 1 below:

Entering into this agreement: These Terms of Service apply to the agreement between Skype Communications S.A. and You, as a user, for the use of the VoIP service. You must enter into this Agreement by clicking on the ACCEPT button in order to use the VoIP service. Furthermore, by using Your Account and the VoIP service You agree to be bound by these

I agree to the Skype [Terms of Service](#) *

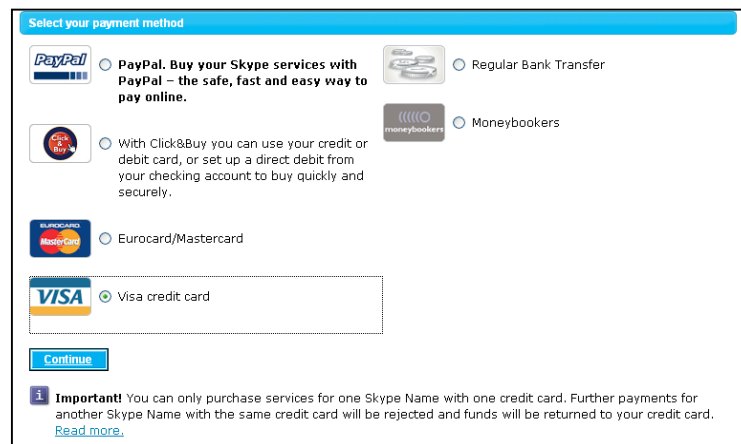
* Indicates a required field

7. You will then be asked for your billing address. Fill in the appropriate information.



The screenshot shows a web browser window displaying the Skype billing address form. The page title is "Welcome back, joe.friday!". The navigation bar includes "Buy Skype Credit", "Your account", and "Sign out". The breadcrumb trail is "Amount -> Address & Credit Card -> Details & Confirmation -> Completed Order". The main heading is "Billing name and address". Below it, there is a prompt: "Choose an existing billing address or create a new address. Use the address your credit card issuer has on file for you." A "New address" section contains several input fields: "First name" (Joe), "Last name" (Friday), "Address" (4321 Easy St.), "Zip/postal code" (19106), "City" (Philadelphia), "State/Province" (PA), and "Country/Region" (United States). There is also a "Name this address" field with a note: "Choose a name you can recognize again." At the bottom, there are two buttons: "Save and use it now" and "Use this address only once".

8. Next, select your payment method. This is how you will pay for the Skype Credit that you are purchasing. When you have chosen, press the **Continue** button.



The screenshot shows the "Select your payment method" screen. It features several payment options, each with a radio button: "PayPal. Buy your Skype services with PayPal – the safe, fast and easy way to pay online.", "Regular Bank Transfer", "With Click&Buy you can use your credit or debit card, or set up a direct debit from your checking account to buy quickly and securely.", "Moneybookers", "Eurocard/Mastercard", and "VISA credit card" (which is selected). A "Continue" button is located at the bottom. Below the button, there is an "Important!" notice: "You can only purchase services for one Skype Name with one credit card. Further payments for another Skype Name with the same credit card will be rejected and funds will be returned to your credit card. [Read more.](#)"

9. Depending on your payment method, you will finish your purchasing by entering further personal information such as your name, address, credit card number, etc. Now you have successfully purchased Skype Credit and can make SkypeOut calls.

Appendix D: Updating Skype

Skype updates its software periodically, and you want to make sure that you have the latest version of the program on your phone's flash drive. To update Skype, you will first download the files from the Skype Web site and install them to your computer. Then you will override the old files by copying and pasting the new files onto the phone.

⇒ Anytime you update your Skype software, you should also do so for SkyMagic or else you may experience problems with your phone! Instructions about how to update your SkyMagic can be found in Appendix E.

Downloading Skype

The first step you must take in order to update your phone's version of Skype is to acquire that version by downloading it from the Skype Web site and installing it onto your computer.

1. To begin, open your Web browser. In the address bar, type in the URL for the Skype home page: `http://www.skype.com` and press your **Enter** key.



2. When the Skype Web page has fully loaded, click on the link that says **Download Skype**.



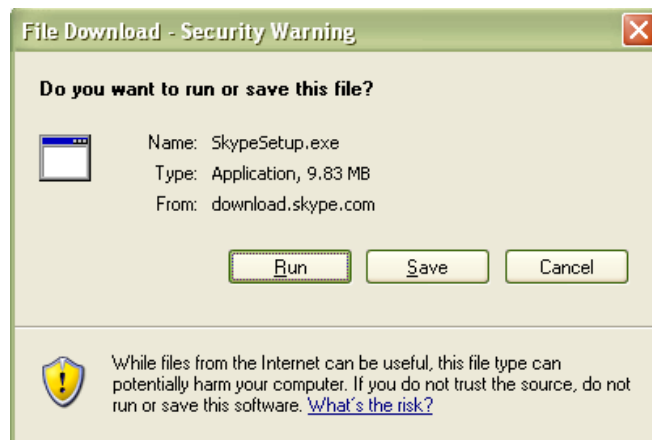
3. On the next page that loads, press the **Download** button.



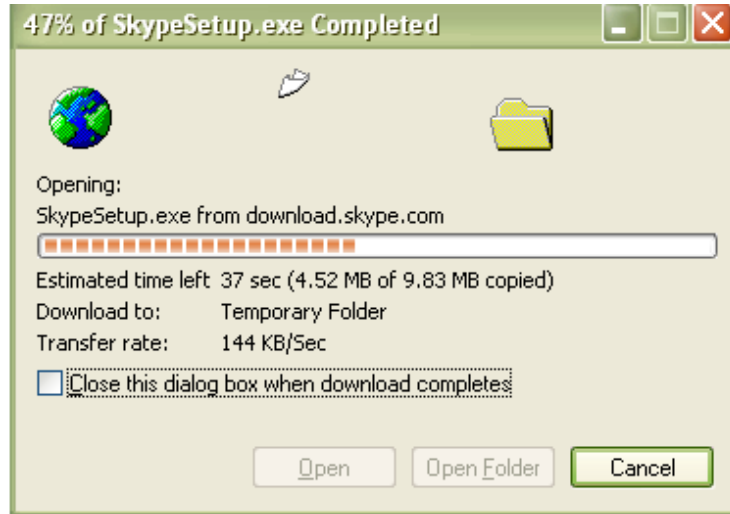
4. Another page will load. Press the **Download** button once again.



5. When the download window opens, choose the **Run** option.



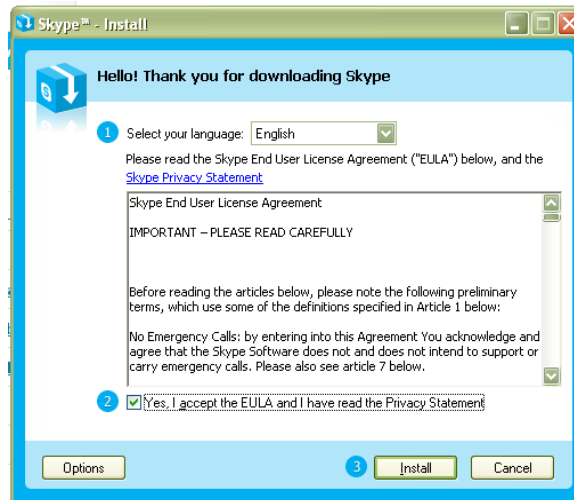
6. Your computer will now download a file called `SkypeSetup.exe`. This may take a few seconds.



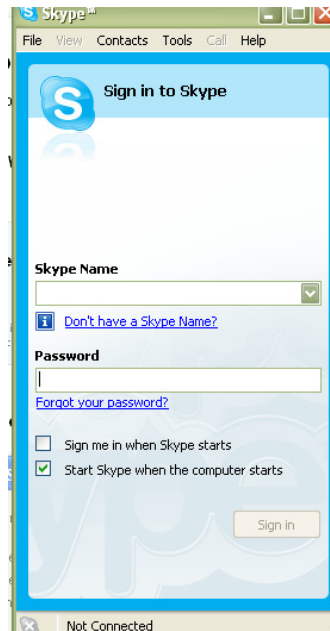
7. When the download finishes, you will see a window asking what you want to do with the file. Again, press the button that says **Run**.



8. A window containing the Skype End User License Agreement will appear. Check the box that says **Yes, I accept the EULA and I have read the Privacy Statement**. Then click **Install**. The Skype files will now be copied to your computer.



9. You will now see the sign-in window, signifying that you have completed the download and installation of the program. Close the window and continue reading.



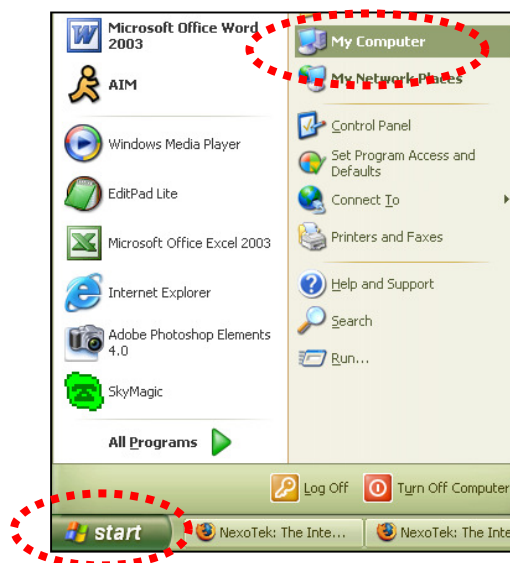
Replacing the Skype Files

Now that you have downloaded and installed the latest version of Skype, the program files should be on your computer. All you have left to do is put them on the flash drive of your memory phone, and you will have the most updated version of Skype ready to go.

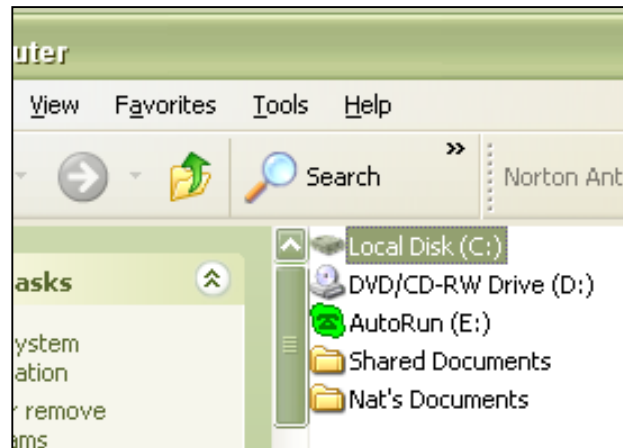
1. To begin, plug the NT-P100M into your computer's USB port, but do not run SkyMagic or Skype. When the AutoRun window appears, click **Cancel**.



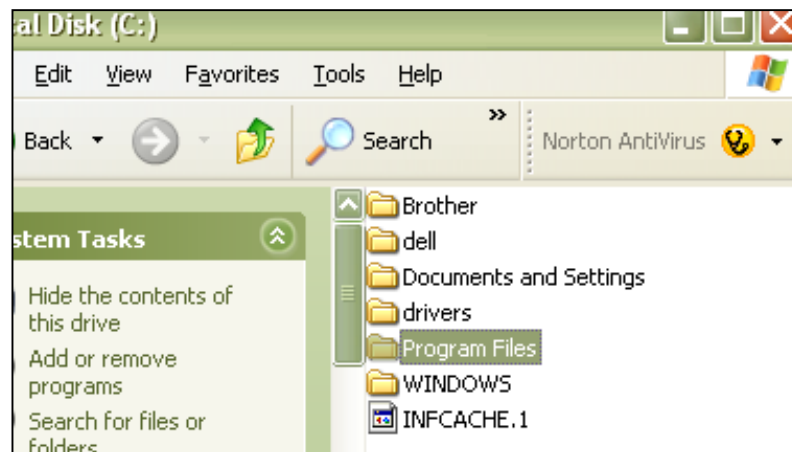
2. Go to your **Start** menu and click on the **My Computer** icon.



3. When the My Computer window opens, click on the icon that says **Local Disk (C:)**.



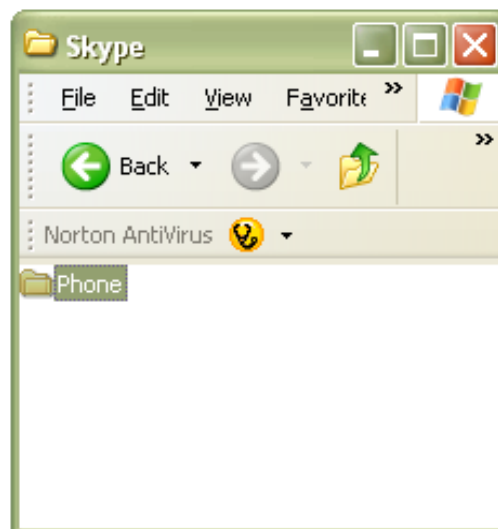
4. In the new window titled Local Disk (C:) that appears, double-click on the folder called **Program Files**.



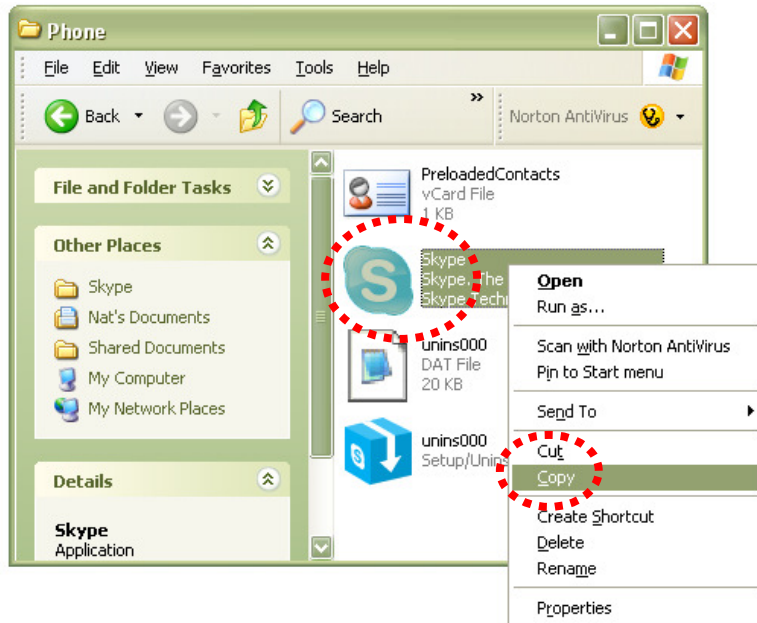
5. In the Program Files window, scroll down and look for the folder labeled **Skype**. Double-click on it.



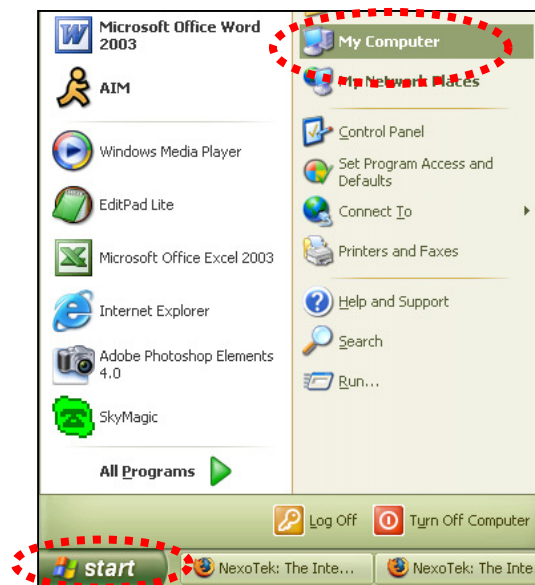
6. Inside the Skype folder, you will see another folder called **Phone**. Double-click on this.



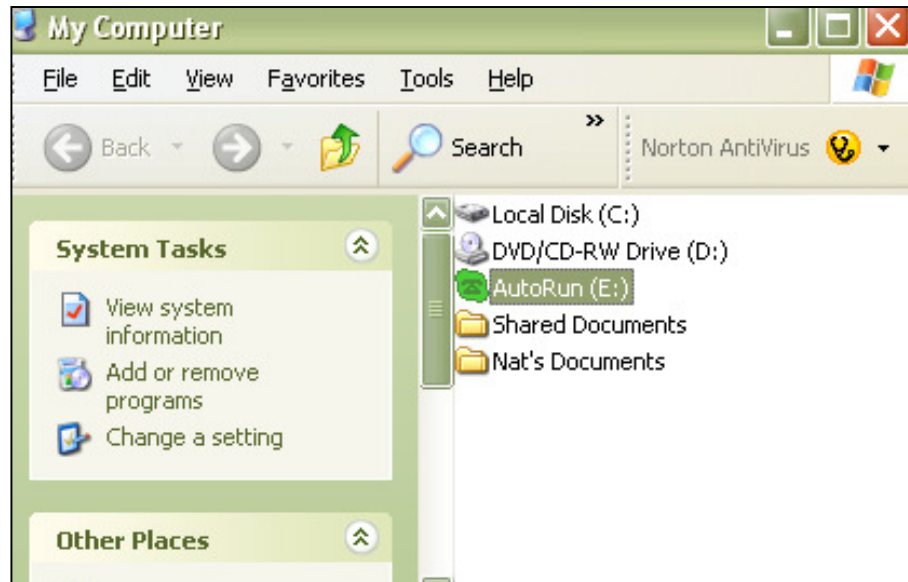
7. Inside the Phone folder, Right-click on the **Skype** icon and select **Copy**. After that, you may close the Phone window.



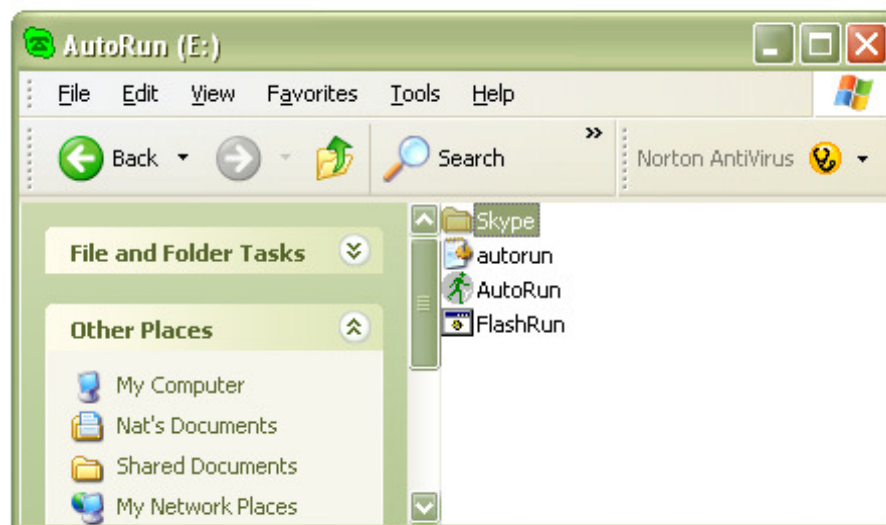
8. Go to your computer's **Start** menu and click on **My Computer** again.



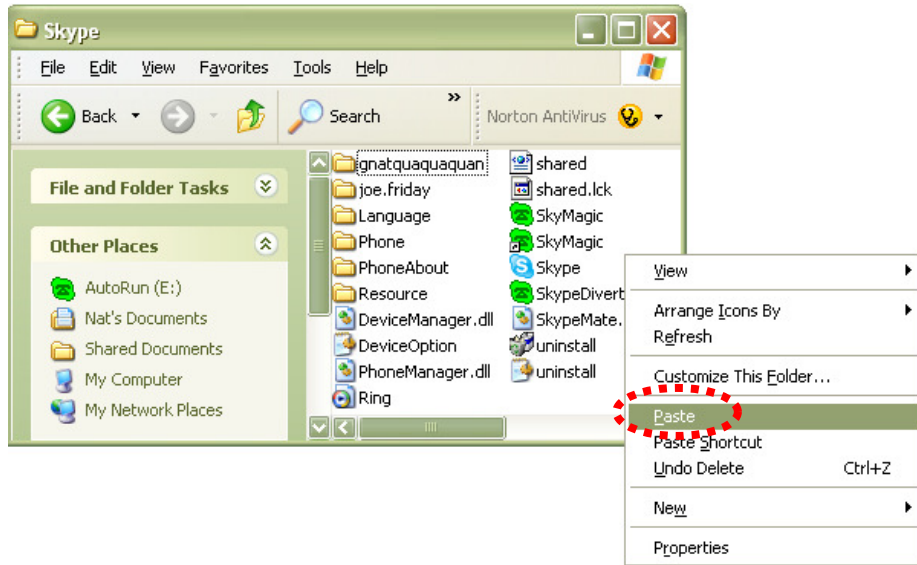
9. In the My Computer, you will see a drive called **AutoRun**. The icon should be the SkyMagic icon – a dark green phone against a light green background. Double click on this icon.



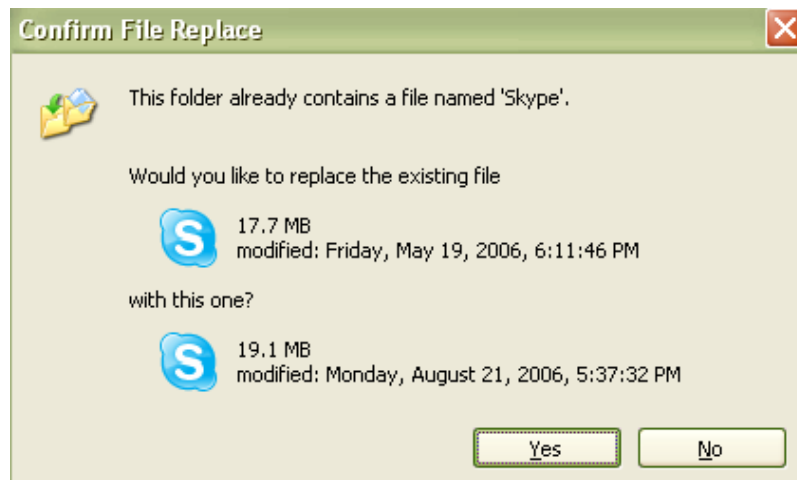
10. Inside of this AutoRun window, double-click on the **Skype** folder.



11. In the Skype folder, right-click and select **Paste**.



12. A popup titled `Confirm File Replace` will appear telling you that the folder already contains a file called `Skype`. This is referring to the old file. Since you want to update your version, click on the button that says **Yes to All**.



After waiting for a few seconds, the new Skype file will have successfully copied to your phone's flash drive. Now you can rest assured that your Memory Phone will auto-run using the most recent version of Skype. Don't forget to also do the same for SkyMagic! Instructions are in Appendix E.

Appendix E: Updating SkyMagic

In order to keep up with Skype's newest releases, NexoTek updates its SkyMagic software as well. You will want to make sure that you have the latest version of the SkyMagic program on your phone's flash drive in order to ensure that your phone works properly with the latest version of Skype. To update SkyMagic, you must first download the files from the NexoTek Web site and install them to your computer. Then you will override the old files by copying and pasting the new files onto the phone.

⇒ For instructions about how to update your Skype software, which you should do anytime you update SkyMagic, please see Appendix D.

Downloading SkyMagic

The first step you must take in order to update your phone's version of SkyMagic is to acquire that version by downloading it from the NexoTek Web site and installing it onto your computer.

1. Begin by typing `http://www.nexotek.com/download.html` in your Internet browser and pressing **Enter**.



2. On the Web page that loads, you will see the latest version of SkyMagic that NexoTek has made available for download.

Software Downloads

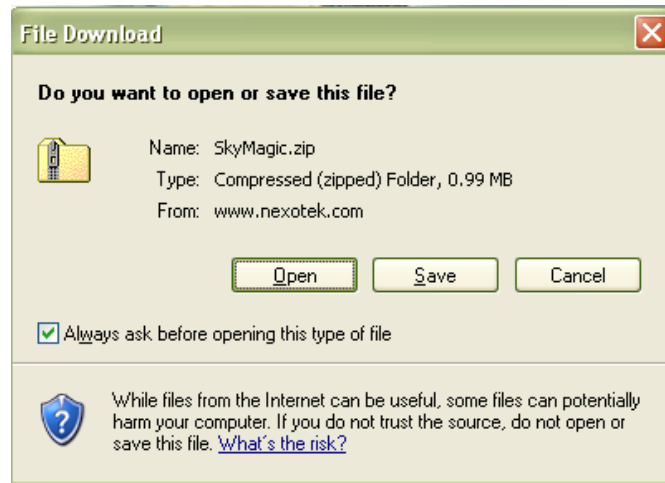
In order to enjoy the full features of your phone, you will want to have the latest version of NexoTek's software.

You can download the software for Skype, MSN Messenger, and VoipBuster here. Be on the lookout as we update our phones to support even more instant messaging programs!

For Skype

Name	Version	Date	Notes
SkyMagic for Windows	3.0.0.28	8.02.2006	Support All Model
SkypeMate for Mac OS X	1.0.0.9b	5.26.2006	Support P100M, P500, P600S, W100D
SkypeMate for Linux	1.1.0.01	9.28.2005	Fedora Core 3, Support P100M & P600S

3. Begin the download by clicking on the version link. When a download window appears, press **Open**.



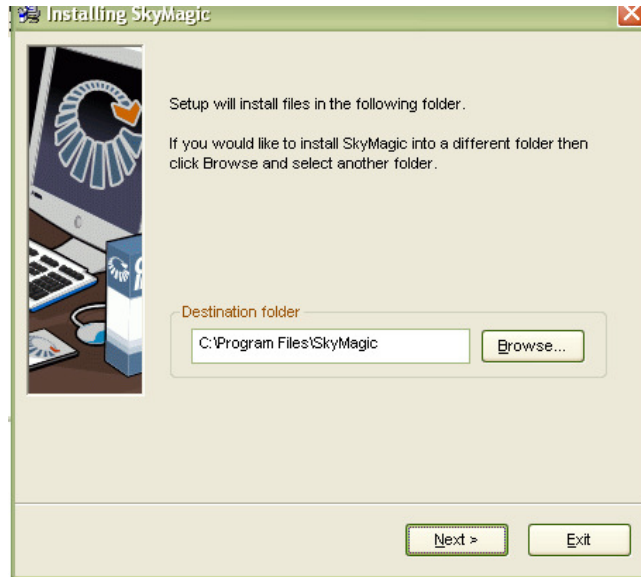
4. After you wait a few seconds, a window will appear with the SkyMagic program. The icon will say SkyMagic and its version number. Double-click on this icon.



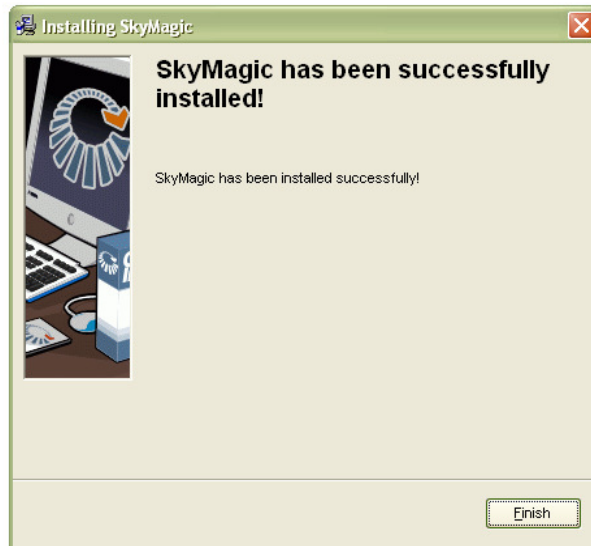
5. When a security warning window comes up, choose **Run**.



6. Your computer will let you choose where you want to save the SkyMagic files. Make sure they are in **C:\Program Files\Sky Magic**, click **Next>**.



7. Installation should take a few seconds. When a window telling you that SkyMagic has been installed successfully appears, press the **Finish** button.



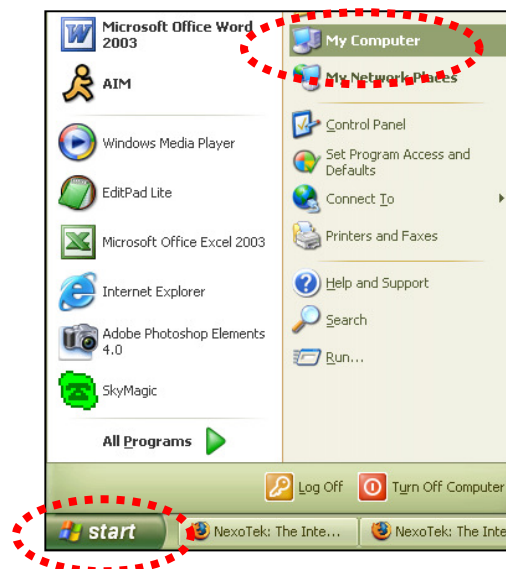
Replacing the SkyMagic Files

Now that you have downloaded and installed the latest version of SkyMagic, the program files are on your computer. All you have left to do is put them on the flash drive of your memory phone, and you will have the most updated version of SkyMagic ready to go.

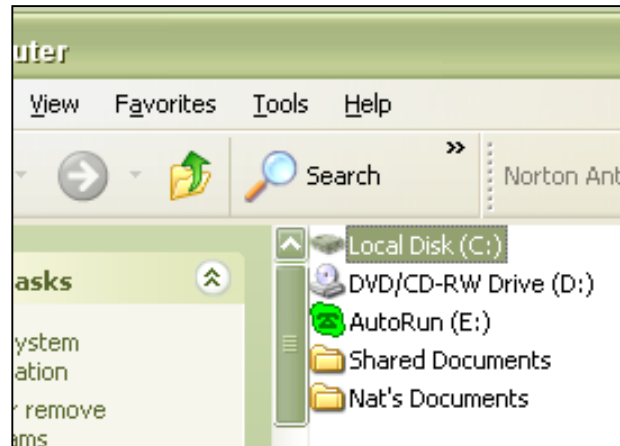
1. To begin, plug the NT-P100M into your computer's USB port. When the AutoRun window pops up, click **Cancel**.



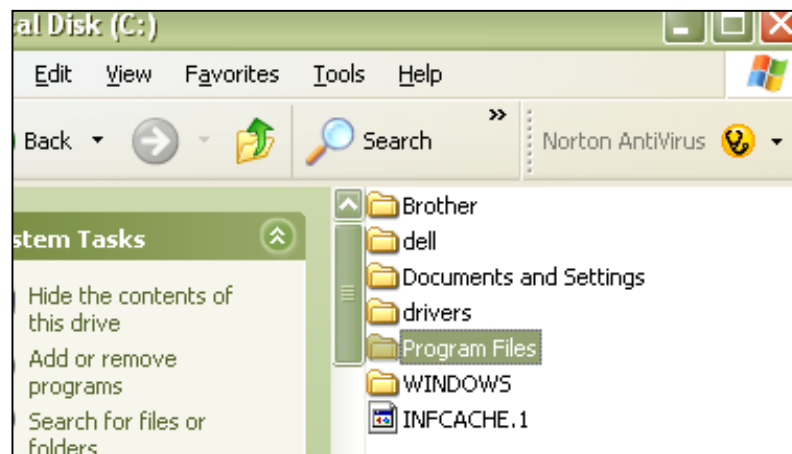
2. Go to your **Start** menu and click on the **My Computer** icon.



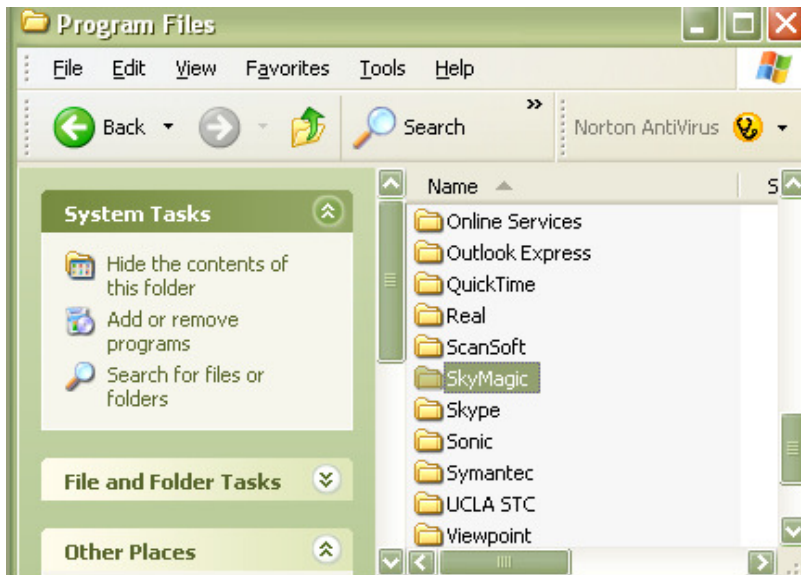
3. When the My Computer window opens, click on the icon that says **Local Disk (C:)**.



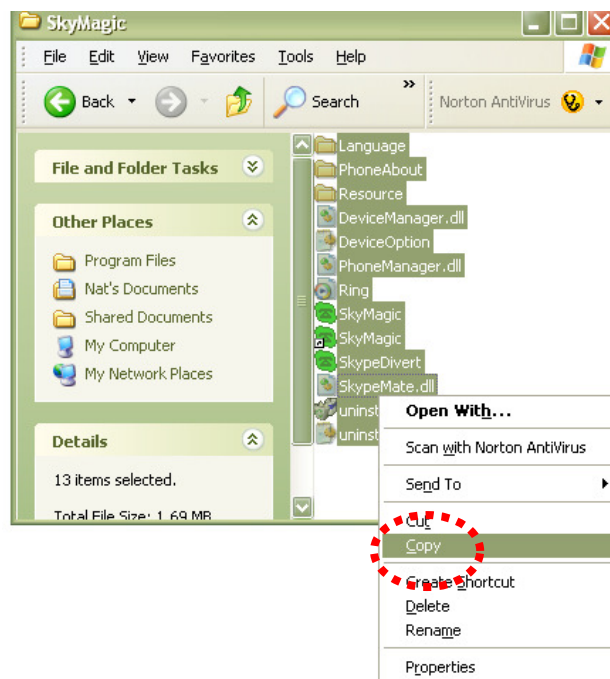
4. In the new window titled Local Disk (C:) that appears, double-click on the folder called **Program Files**.



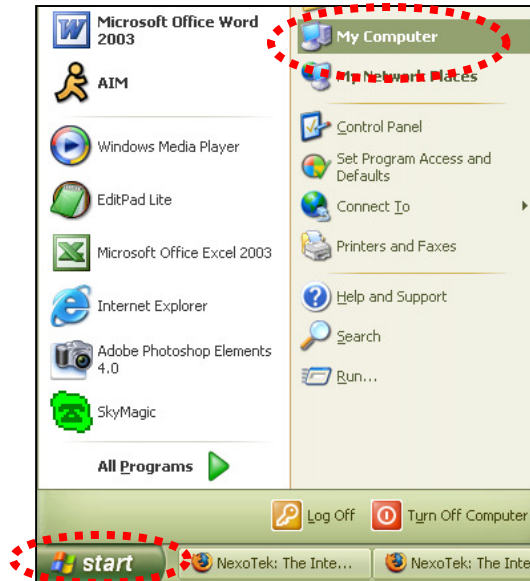
5. In the Program Files window, scroll down and look for the folder labeled **SkyMagic**. Double-click on this icon



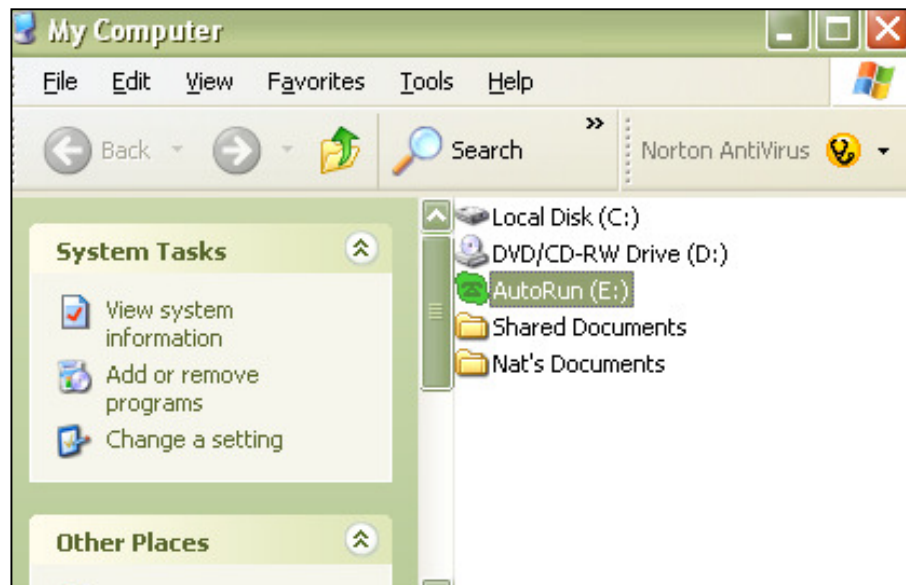
6. In the SkyMagic window that opens, select all of the icons. Then right-click and select **Copy**. After that, you may close the SkyMagic window.



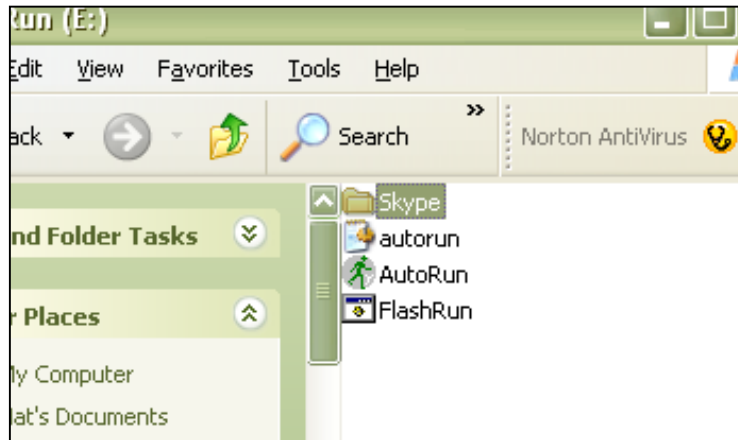
7. Go to your computer's **Start** menu and click on **My Computer** again.



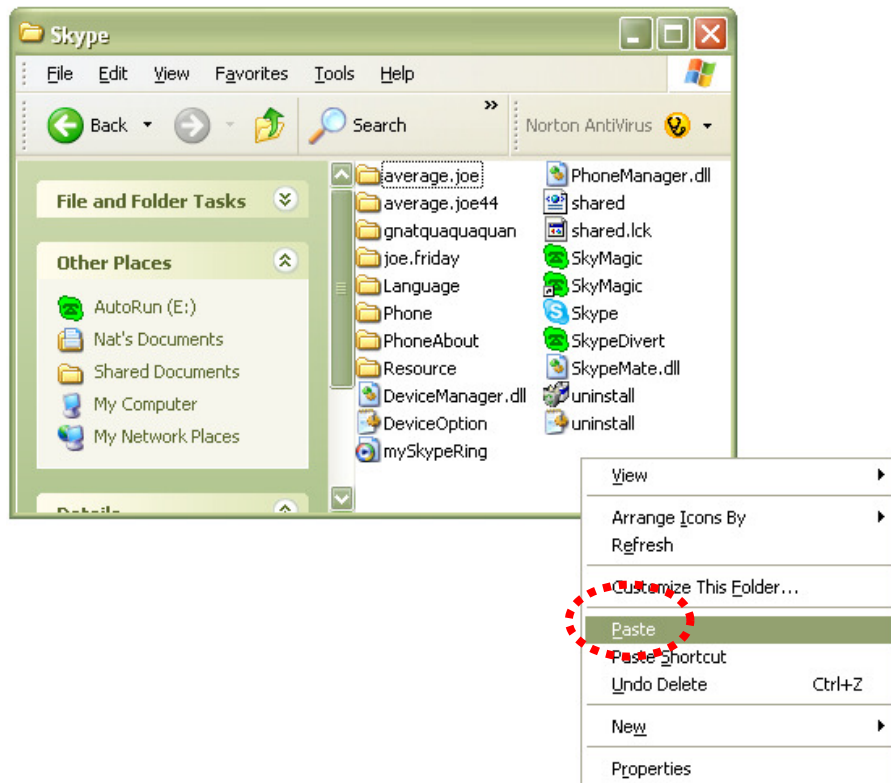
8. In the My Computer, you will see a drive called **AutoRun**. The icon should be the SkyMagic icon – a dark green phone against a light green background. Double click on this icon.



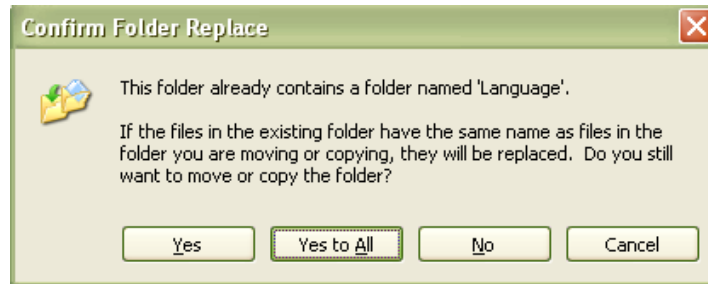
9. Inside of this AutoRun window, double-click on the **Skype** folder.



10. In the Skype window, right-click and select **Paste**.



11. A popup titled `Confirm Folder Replace` will appear telling you that the `Skype` folder already contains files with the same names. This is referring to the old `SkyMagic` files. Since you want to update your version, click on the button that says **Yes to All**.



12. After waiting for a few seconds, the new `SkyMagic` files will have successfully copied to your phone's flash drive. Now you can rest assured that your `Memory Phone` will auto-run using the most recent version of `SkyMagic`

